

**house**  
southeast  
theatre network

**PitchUp**

Helping theatre-makers  
and venues start conversations

PORTSMOUTH  
**GUILDHALL**

**October 2023**

# WELCOME

We love a good collaboration, bringing different voices and ideas together to create something unexpected and new.

Pitch Up has that at its heart, placing venues and artists on the same platform to talk about what they have to offer and what they need to deliver the best contemporary theatre for audiences. By focusing on this reciprocal common-purpose, we hope that alliances are formed which help artists to create their best work and buildings to unlock their creative potential. Take the opportunity to chat to someone new and let us know what happens as a result.

We'd like to thank Portsmouth Guildhall who have helped us shape and prepare this event and Stagertext for their captioning services.

Katy, Mark, Meghan & Jonathon  
**house Theatre team**

*house is an initiative aimed at better connecting theatre-makers, venues, and audiences across the South East of England. It is delivered by Farnham Maltings and funded by Arts Council England.*



Supported using public funding by  
**ARTS COUNCIL  
ENGLAND**





# PORTSMOUTH GUILDHALL

It is the vision of The Guildhall Trust, the organisation that runs Portsmouth Guildhall, to become one of the country's leading cultural organisations which places its communities at the centre of everything it does, inspiring, entertaining and transforming lives.

A registered charity, The Guildhall Trust provides a range of inspirational opportunities to develop a passion for music and the arts through its engaging Get Involved programme of workshops, activities, groups and courses.

Dedicated to supporting emerging and developing creatives,

Portsmouth Guildhall offers a range of spaces for rehearsal and performance, a Headstart Creatives programme offering affordable office space and the Trust's Harbour development programme provides seed funding, residency and in-kind support.

Opening in Spring 2024, The Base will be an exciting, new creative space for young people aged 11-25 that will give access to a range of facilities, equipment and a series of specialist programmes and workshops that will support creative and educational development.

---

[curt.hill@portsmouthguildhall.org.uk](mailto:curt.hill@portsmouthguildhall.org.uk)  
**[portsmouthguildhall.org.uk](https://www.portsmouthguildhall.org.uk)**



@PortsmouthGhall



# VICTORIA MELODY

## The Enthusiasts

Immersive audio

---

*The Enthusiasts* is an immersive audio experience where an artist goes into different communities and explores their quirks and what makes them special.

When I embed myself into communities I meet incredible characters. I wanted to find a way to give these voices a platform.

Audiences get given a secret location – for example a working pigeon lofts or a funeral parlour. We give out headphones and the audiences are free to roam whilst they listen to beautiful, moving, funny and vital audio from communities who are on the brink of change.

It's like being in a living documentary – afterwards audiences get to meet the characters in the audio – I like facilitating conversations between people who don't usually speak.

I want to work with new community groups that I haven't collaborated with previously to unearth new stories.

## ABOUT THE COMPANY

**Victoria Melody** is a British visual and performance artist and theatre-maker. Inspired by ethnography she immerses herself in different communities and becomes an active participant in their rituals as research for her work. Vic documents from the inside presenting contemporary voices that are rarely heard and connecting audiences with fascinating stories that might otherwise go unnoticed.

Vic is one of Britain's best-loved theatre-makers. Hailed as a '*national treasure*' by Time Out. The Times described Vic as '*one of the most charming independent performance-makers in Britain,*' whose work is '*smart, warm and unpretentiously funny.*' Her past shows include the critically-acclaimed Head Set, Ugly Chief and Major Tom.

---

### Pitcher

Victoria Melody (she/her)

[info@victoriamelody.com](mailto:info@victoriamelody.com)



@VictoriaMelody  
victoriamelody.com

# CAN'T SIT STILL

## The Snowy Day

Family Theatre / Dance

---

*The Snowy Day* will be a small-scale one-person dance show for 1-4 year olds and their grown-ups. Based on the award-winning book by Ezra Jack Keats, *The Snowy Day* tells the gentle story of Peter, who goes out to explore his New York neighbourhood after the season's first snowfall. The book is brought to life by collage illustrations using a bold colour palette, silhouette and pattern that will influence our design.

The show will be staged in the round on a flat floor, for a maximum audience of 70. Beginning in Peter's apartment the set will transform when he heads outside allowing for an interactive, sensory snow play experience.

We are planning to tour in December '24 to Feb '25 to studio theatres and libraries. We would like to develop relationships with potential co-commissioners as well as those interested in tour dates.



## ABOUT THE COMPANY

**Can't Sit Still** uses creativity and culture to disrupt social inequalities; inspiring individuals, connecting communities and spreading joy.

We create performances and projects with and for unusual audiences, often in unusual locations, by turning ideas, systems and people (!) upside down.

Our company values are:

- Radical care: people, process, planet
- Disruptive generosity: transparency, Co-creation. Structure, not hierarchy
- Stubborn inclusivity: access at the heart of everything we do
- Courageous learning: we won't always get things right, and when we don't we promise to learn and be better

---

### Pitcher

Cat Boot (she/her)

[cat@cantsitstill.net](mailto:cat@cantsitstill.net)



[@cant\\_sit\\_still\\_arts](https://www.instagram.com/cantsitstill_arts)  
[cantsitstill.net](https://www.cantsitstill.net)



# STONECRABS THEATRE CO

## Joe Carstairs

Historical fiction

---

StoneCrabs Theatre presents to you the extraordinary *Joe Carstairs*, a woman who thrived on individualism and swam against the tide in her unique, swashbuckling, nonconformist style.

She emerged from a turbulent childhood to embrace a perilous lifestyle, driving ambulances on First World War battlefields at a tender age.

Speedboat world record holder, heir to the Standard Oil fortune, Carstairs came of age in the 1920's. Joe loved engineering, speed and thrived on stiff competition; but above all, Joe loved women. Lovers included Gertrude Stein, Marlene Dietrich, and Dolly Wilde.

Sail with the Stonecrabs crew to the Isle of Wight and discover the fierce and adventurous Joe Carstairs and her jaw-droppingly amazing story. Experience her life with all its raw, rollicking reality in a high-spirited theatre show fused with physicality, charged word and music.

The show will be in London (Omnibus Theatre) and Isle of Wight, June - July 2024. We are looking for partnerships and support for a 2025 tour.

## ABOUT THE COMPANY

**StoneCrabs** is a theatre company that produces form breaking theatre that tours locally, nationally, and internationally. We place underrepresented voices and untold stories centre stage.

We have previously toured *Utter Mess*, *Busu & The Damask Drum* and *The Trial*.




*'high quality, innovative and socially engaged'*. Time Out.

---

### Pitchers

Franco Figueiredo (They)  
Krysia Mansfield (She)

[fabio@stonecrabs.co.uk](mailto:fabio@stonecrabs.co.uk)

   [@stonecrabstheatre](https://www.instagram.com/stonecrabstheatre)  
[stonecrabs.co.uk](https://www.stonecrabs.co.uk)

# THE CLAY CONNECTION

## Holy Dirt

Dance/theatre

---

*Holy Dirt* is a new performance by Vidya with theatremaker and director David Glass. It tells stories from the hills of India rooted in eco-feminism; stories of women and their deep connection with their land or Boomi devil/Goddess Earth, from the Himalayas to the Mudumalai forests of Southern India. The ambition is to make a piece that surprises in its physicality and to develop an authentic, intercultural voice.

At present, the show is conceived for indoor and outdoor spaces. Involving local people in the possibilities of clay-based movement is key to the idea; how this tactile, essential medium relates to the body (and soul) of people of all ages, ethnicities and abilities.

We are seeking partners to support the development of the piece, from seed-funding to commissioning or for future presentation and would be interested to collaborate with venues that include the visual arts or education programmes.

The project is due to start in Spring 2024, with partners in India, and previewing in the UK in autumn 2024.



## ABOUT THE ARTIST

**The Clay Connection** is the umbrella title for Vidya Thirunarayan's performance work combining her skills in Bharata Natyam dance and ceramics.

In 2015 she began exploring the potential of bringing these two artforms together in performance, producing *Voices From the Kiln*, a film and live-art piece, which remains in her repertoire.

In 2021 she made the outdoor show *Lives of Clay*, a Without Walls, Brighton Festival, Certain Blacks commission, funded by Arts Council England. It toured nationally in 2022/23 and will be touring India later this year and as an installation in the UK in 2024.

---

### Pitchers

Vidya Thirunarayan, Performer  
Lisa Wolfe, Producer (both she/her)

[vidyathiru@hotmail.com](mailto:vidyathiru@hotmail.com)

[wolfework2@gmail.com](mailto:wolfework2@gmail.com)

[f](https://www.facebook.com/vidyathiru) [X](https://www.instagram.com/vidyathiru) [@vidyathiru](https://www.instagram.com/vidyathiru)  
[vidyathirunarayan.com](https://www.instagram.com/vidyathirunarayan.com)



# ZOO CO & IMPROBABLE

## Perfect Show for Rachel

Theatre championing accessibility

---

Step into Rachel's world in this experimental show as a learning disabled artist has the power to lead the creation of her 'Perfect Show'.

Rachel is a theatre-loving, enigmatic 31 year-old who loves Kylie Minogue, heckling from the front row and seeing people falling over. She is a learning disabled care-home resident, and sister to Flo, Zoo Co's Artistic Director.

Sitting on-stage on a throne with her custom-built tech desk, she takes charge as the director of every unique performance in real-time. A touch of a button can trigger music, lighting, theatrical scenes or choreography, brought to life instantly by a company of performers.

*Perfect Show for Rachel* was developed with Rachel, to create a show on her own terms. It explores who defines artistic taste, and questions who that currently excludes.

Following their sell-out run at Barbican last year, we're seeking mid-scale venue partners to commission the remount and programme *Perfect Show For Rachel* in accessible venues as part of our Spring/Summer tour.

## ABOUT THE COMPANY

Established in 2013, **Zoo Co** is a multi-award winning theatre company based in Croydon. We loudly and proudly champion creative access, centering deaf, disabled and neurodivergent artists to create genre-defying, ambitious, electric and playful productions.

Established 25 years ago, **Improbable** occupies a vital space in the landscape of UK theatre. At the heart of Improbable's artistic practice is improvisation. Whether in performance, rehearsal or development, the practice and philosophy of improvisation is at the core of our creative process.

---

### Pitcher

Flo O'Mahoney (she/her)

[flo@wearezooco.co.uk](mailto:flo@wearezooco.co.uk)



@WeAreZooCo

[wearezooco.co.uk](http://wearezooco.co.uk)



## PHOENIX ARTS

Phoenix Arts were recently awarded NPO status by ACE and wants to encourage Hampshire-based artists to engage with us and unlock the potential of a town and district that is in need of an overdue creative infusion.

Rob Allerston | [rob.allerston@phoenixarts.co.uk](mailto:rob.allerston@phoenixarts.co.uk)  
[phoenixarts.co.uk](http://phoenixarts.co.uk) | [@PhoenixBordon](https://www.instagram.com/PhoenixBordon)



---

## THE SPIRE

The Spire is a creative space for theatre, performance, community collaboration, events and experimentation, located in the beautiful Grade II listed former St Mark's Chapel in East Brighton. The Spire aims to develop platforms for underrepresented artists from all disciplines to give audiences access to affordable, quality artistic experiences on their doorstep.

Faith Dodkins | [info@thespirearts.org](mailto:info@thespirearts.org)  
[thespirearts.org](http://thespirearts.org) | [@TheSpireArts](https://www.instagram.com/TheSpireArts)



---

## GRACE EYRE

'*Not Another Chat Group!*' is a production by the Grace Eyre Friendship Group; a group for people with learning disabilities that meet up and go on activities or chat online.

Through the show we hope to promote understanding of the neurodivergent community and allow the voices of people with learning disabilities and/or autism to be amplified.

Jenny Good | [jgood@grace-eyre.org](mailto:jgood@grace-eyre.org)  
[grace-eyre.org](http://grace-eyre.org) | [@GraceEyreF](https://www.instagram.com/GraceEyreF)



## NEW THEATRE ROYAL

## NEW THEATRE ROYAL PORTSMOUTH

The New Theatre Royal is a Grade II\* listed Victorian Theatre in the heart of Portsmouth. A cultural champion within the city, with a mission to help build a sense of place, using creative engagement to assist our communities to flourish, and enrich people's lives.

Anna Farthing |  
anna.farthing@newtheatreroyal.com  
newtheatreroyal.com | @newtheatreroyal

---

## CULTURE IN COMMON



Culture in Common is Hampshire's first Creative People and Places programme. We're collaborating on existing events and festivals, developing new creative opportunities in both arts and non-arts settings and establishing a series of regular participation opportunities to help support a thriving, community-driven Forest-wide cultural scene.

Jemma Corbin | jemma.corbin@energiseme.org.uk  
cultureincommon.co.uk

---

## CHICHESTER FESTIVAL THEATRE

## chichester festival theatre

We are launching a new Artists Development Programme that aims to nurture and support a number of local and national theatre makers through bespoke practical initiatives for freelancers at the beginning of their careers.

Sophie Hobson | sophie.hobson@cft.org.uk  
cft.org.uk | @ChichesterFT

# LITTLE BULB THEATRE

## The Magic Library

Interactive Theatre

---

*The Magic Library* is a short, interactive performance installation made for families and children of all ages that explores the wonder of words and celebrates the real magic of libraries.

Originally commissioned by The Spring for Christmas 2022, the show endows children as trainee Word Wizards who, along with the assistance of loveable Head Librarian, Lionel Letterman, are tasked with helping Willamina, The Word Wizardess, overcome a particularly terrible bout of writer's block. Cue friendly bookworms, secret portals, flying books and magic spells as we invite audiences into a world of enchantment that celebrates the magic of stories and the wonder of libraries.

The ambition was to inspire children's imaginations and love of creative writing through storytelling, and in partnership with the local library, ran a very successful story competition that resulted in a published book!

We want partners to help us redevelop the show as a small, flexible, accessible piece that can tour to libraries, community spaces and potentially schools in the South.



## ABOUT THE COMPANY

**Little Bulb** is an award-winning national touring company based in the South West of England. We are committed to developing devised and physical theatre performances which explore and illuminate minute human details that, in a world so big, are easily swallowed up.

Combining innovative character work, beautiful imagery and exciting homemade music, we aspire to create performances that with humour and sadness will touch, startle and entertain.

---

### Pitchers

Clare Beresford (she/her)

Fiona Baxter (she/her)

[directors@littlebulbtheatre.com](mailto:directors@littlebulbtheatre.com)

[fi@littlebulbtheatre.com](mailto:fi@littlebulbtheatre.com)



@Little\_Bulb

[littlebulbtheatre.com](http://littlebulbtheatre.com)



## ABOUT THE COMPANY

**Cockahoop** is Lucy, director/dramaturg/facilitator and Steph, writer/actor. Together we make participatory productions.

Recognising our lives are contradictory, tough, joyful, funny and always individual, we tell brand-new stories using poetic language and strong visual imagery to reimagine the society we live in now, for the better.

We create unexpected roles for women, focus on voices underrepresented in the arts, and convene diverse companies, valuing all kinds of life experience as well as theatre experience.

---

### Pitcher

Lucy Richardson (she/her)

[lucyabigailannen@gmail.com](mailto:lucyabigailannen@gmail.com)



@cockahooptheatre  
cockahooptheatre.  
squarespace.com

# COCKAHOOP THEATRE

## The Guest

Theatre

---

In a town near 'here', a couple are visited by a stranger from 'there'. Do they invite them in or build the wall higher? The stranger keeps returning with offers and demands. How can she tell her story and be welcomed? Each time the couple must act. The days get hotter.

*The Guest* is Cockahoop's response to the movement of people due to war, climate change and inequity. It will be produced in July 2024, to meet the lead up to the general election, at Omnibus Theatre in Clapham. Phase Two is touring *The Guest* in spring 2025 to continue the conversation wherever there's an appetite for it and that is where we are looking for partners.

Each scene of the play starts in the same way with the Stranger arriving. The structure is repetitious. The same stranger, different offers or the same offer and different responses. Sometimes it seems that it has never happened before and sometimes things are familiar to the characters.

Each time the play is performed we hope to collaborate with local organisations representing migrant communities to encourage artistic responses to the work and create a series of engagement events which combine challenging discussion with a festival feel.

# NATALIE RECKERT & MARK MORREAU

## Natalie Inside Out Digital Circus

---

Playful, beautiful and highly skilled, this collaboration between virtuoso hand-balancer **Natalie Reckert** and digital artist **Mark Morreau** uses technology and video projection to turn our conventional ideas of circus upside down and inside out. Literally.

*Natalie Inside Out* is a small-scale Studio Theatre show exploring the motivations, mechanics and emotions of the circus body through interactive technologies, acrobatic performance, spoken word, and storytelling.

Part performance, part Ted Talk, part live investigation, it can be adapted to play in a range of black box studio spaces, and works in multiple performance contexts spanning Theatre, Live Art, Circus, Dance and Digital Arts.

Natalie Inside Out is available for touring throughout 2024. The performance can be captioned and audio described.

We also want to generate interest for our next show, *The Human Interface*, currently in R&D, which we envisage being tour ready in 2024/5. We're looking for residency opportunities, producing partners, and possibly producers / show bookers.



## ABOUT THE COMPANY

Drawn together by a shared desire to investigate the inner workings of the circus body Mark and Natalie formed their current collaboration in 2016. Throughout 22/23 they have been Fellows of the prestigious Another Route Programme, a consortium administered by ArtsAdmin. They were part of this year's highly competitive selection of companies pitching at Montreal's MICC market place.

They are currently developing new work in partnership with Creative Culture King's College London and have been selected for the The Sanctuary residency program at the Lighthouse in Poole as well as residencies at Surge, Glasgow and V2, Rotterdam.

---

### Pitchers

Natalie Reckert (she/her)

Mark Morreau (he/him)

[nataliereckert@hotmail.de](mailto:nataliereckert@hotmail.de)

[mark@morreaux.co.uk](mailto:mark@morreaux.co.uk)



@natalie\_inside\_out  
natalieinsideout.com



# WHATNOT THEATRE

## Flotsam and Jetsam's Voyage to the Trash Vortex

Interactive & accessible family theatre

---

### ABOUT THE COMPANY

**WhatNot** are a physical duo of two women who create highly visual, playful participation theatre from scratch for families and young people.

Founded in Oxford in 2018, they share a passion for creating original stories, accessible for all, using a mix of participation, physical storytelling and puppetry to engage and excite our audiences.

WhatNot's work is highly versatile, creating performances for both indoor and outdoor spaces in the most unusual of places.

---

#### Pitchers

Emma Claire-Blythe (she/her)  
Lucy Hoult (she/her)

[whatnot.theatre@gmail.com](mailto:whatnot.theatre@gmail.com)



@TheatreWhatnot  
[whatnot.theatre.com](http://whatnot.theatre.com)

We find our Pirates, Flotty & Jetty, sat in their deck chairs stranded on a desert island surrounded by plastic creatures; water bottle fish, milk bottle seagulls, tupperware jellyfish, and microwave-tray crabs line the plastic tarp sea, with crashing bubble wrap waves.

With the prospect of eating nothing but coconuts for an eternity they hatch a plan to escape using the plastic washed upon the shore daily.

Join them for the launch ceremony of the great Polymer Poseidon, the most pliable pirate ship on the high seas, with a patchwork quilt of plastic bags for her sails.

WhatNot are looking to generate new relationships in the South East, particularly with communities who may experience barriers to attending more traditional theatre. They are also looking for support on writing funding applications.

# LUPINS THEATRE

## It is I, Seagull / Is Opera Boring?

Comedy/Opera

---

In 2020, Lucy realised she had had enough. Enough of sacrificing her mental health in pursuit of a dream. Lucy took back control and began to write and perform work that intertwines opera and comedy with life's big topics – joy, failure, self-esteem, space travel and even death.

*Is Opera Boring?* is a comedy show for opera haters and curious minds in which Lucy reveals that opera is not perhaps as glamorous as it might seem. *It is I, Seagull* combines Lucy's experiences as a professional opera singer with the stories of female Soviet cosmonauts. It fuses opera and comedy to expose current and historical everyday sexism, asking what it really takes to achieve something extraordinary, and is it worth it?

Both shows are available for touring and we are looking to widen our contacts as we grow in size, scope and ambition. We are keen to connect with venues and freelancers as we continue to develop our work in the region.

---

### Pitchers

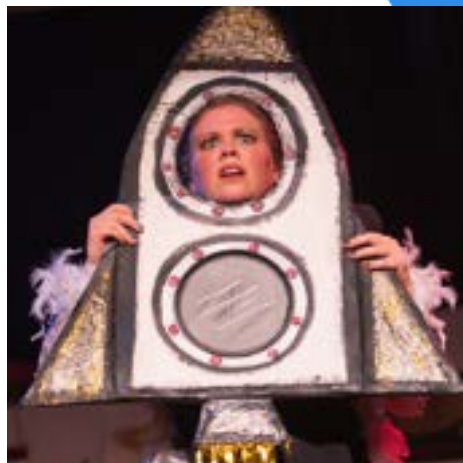
Lucy Mellors (she/her)

Sophie Fullerlove (she/her)

[lupinstheatre@gmail.com](mailto:lupinstheatre@gmail.com)



@LupinsTheatre  
[lucymellors.com](http://lucymellors.com)



## ABOUT THE COMPANY

**Lucy Mellors** is an award-winning opera singer and comedy writer from Gosport. She has an MA (Distinction) in Opera Performance from the Royal Welsh College of Music and Drama, winning the Dolan-Evans Memorial Prize, the Valetta Iacopi Aria Prize, & the Seligman Award for Excellence two years running, and a BA (First Class with Honours) in English and Drama from the University of Kent.

Lucy feels passionately about making opera as accessible as possible, and challenging the elitism and misogyny that dominates the industry.

Her work includes projects with English National Opera, Welsh National Opera, Grimeborn Festival, Mid Wales Opera and Longborough Festival Opera.

## FARNHAM MALTINGS

Farnham Maltings is a cultural organisation based in south west Surrey with a regional, national and international reach.

We bring artists and arts organisations together to address key challenges, reach new audiences and share knowledge and skills.

Gina Thorley | [gina.thorley@farnhammaltings.com](mailto:gina.thorley@farnhammaltings.com)  
[farnhammaltings.com](http://farnhammaltings.com) | [@farnhammaltings](https://www.instagram.com/farnhammaltings)

# farnham maltings

## GROUNDLINGS THEATRE

Built in 1784, Groundlings Theatre is grade II\* listed building is full of character with its colourful history and ornate architecture.

We produce 70% - 80% of our yearly program in-house with a mixture of both professional and amateur shows that both entertains the community and highlight its grassroots talent.

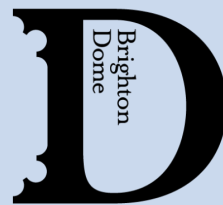
Tobias Robinson |  
[tobias.robinson@groundlings.co.uk](mailto:tobias.robinson@groundlings.co.uk)  
[groundlings.co.uk](http://groundlings.co.uk) | [@GroundlingsUK](https://www.instagram.com/groundlingsUK)



## BRIGHTON DOME

Whether we're creating exclusive associations with national companies or championing emerging talent from the region, long-term partnerships are key to the creative vision for Brighton Dome and Brighton Festival.

Tanya Peters | [tanya.peters@brightondome.org](mailto:tanya.peters@brightondome.org)  
[brightondome.org](http://brightondome.org) | [@BrightDome](https://www.instagram.com/BrightDome)





## BRIGHTON FRINGE

Brighton Fringe sets out to stimulate, educate and entertain all year round through a diverse range of events, performances and workshops.



Throughout May and into June, Brighton Fringe welcomes local, national and international performers and audiences as it showcases creativity in Brighton, Hove and beyond.

Maddie Lock | [takepart@brightonfringe.org](mailto:takepart@brightonfringe.org)  
[brightonfringe.org](http://brightonfringe.org) | [@brightonfringe](https://www.instagram.com/brightonfringe)

---

## THE SPRING

The Spring is a small place where big things happen. Our vibrant and exciting events make Havant, Hampshire and the surrounding region a better place to live.



We are not afraid of taking risks or doing things differently – both in our cultural programmes and our organisation's culture

Sue Dickinson | [sued@thespring.co.uk](mailto:sued@thespring.co.uk)  
[thespring.co.uk](http://thespring.co.uk) | [@thespringhavant](https://www.instagram.com/thespringhavant)

---

## CRYING OUT LOUD

Crying Out Loud are creative producers bringing memorable experiences from extraordinary visual theatre makers to audiences of all ages and abilities.

A key strand of our programme is to support and present visual, site specific and cross artform projects in Portsmouth (where they are based) and the Solent area.



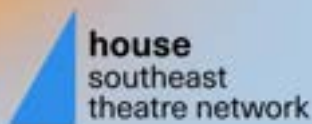
Lucy Babb | [lucy@cryingoutloud.org](mailto:lucy@cryingoutloud.org)  
[cryingoutloud.org](http://cryingoutloud.org) | [@CryingOut\\_Loud](https://www.instagram.com/CryingOut_Loud)

# upcoming house events

ARE YOU RELEVANT?  
ARE YOU RELEVANT?  
ARE YOU RELEVANT?  
ARE YOU RELEVANT?  
ARE YOU RELEVANT?

**network day 2023**

Brixton House  
Thu 9 November



Find out more about the day at [housetheatre.org.uk/network-day](https://housetheatre.org.uk/network-day)

## 2024 training & professional development



**17 Jan:** Growing your Audience Loyalty



**21 Feb:** Enhance your marketing strategies with audience personas



**March - May:** Regional house venue meet-ups

Find out more about our professional development programme at [housetheatre.org.uk/events-and-support](https://housetheatre.org.uk/events-and-support)

# touring in spring 2024



***Choogh Choogh***, by Beeja



***Hermit***, by Simone de Jong



***On Track***, by RedCape Theatre



***The Freshwater Five***, by Deadman

Find out more about house tours at [housetheatre.org.uk/whats-on](https://housetheatre.org.uk/whats-on)

## GIVE US YOUR FEEDBACK

Please let us know your thoughts on the day and the format of the event. This will help us improve the nature of our events to make them as beneficial for all attendees.

Use the QR code to access a short 5 minute survey.

[info@housetheatre.org.uk](mailto:info@housetheatre.org.uk)



@housetheatre  
[www.housetheatre.org.uk](https://www.housetheatre.org.uk)



**house**  
southeast  
theatre network  
farnham **maltings**

# PITCH UP

## Schedule

- 11:00 **Arrivals and refreshments**
- 11.30 **Welcome and introduction from Portsmouth Guildhall**
- 11:45 **Artist Pitches:**  
Victoria Melody, *The Enthusiasts*  
Can't Sit Still, *The Snowy Day*  
StoneCrabs Theatre, *Joe Carstairs*  
The Clay Connection, *Holy Dirt*  
Zoo Co, *Perfect Show for Rachel*
- 12:10 **Venue Pitches:**  
Phoenix Arts  
The Spire  
Grace Eyre Foundation  
New Theatre Royal Portsmouth  
Culture in Common  
Chichester Festival Theatre
- 12:40 **Break with lunch & refreshments**
- 13:30 **Artist Pitches:**  
Little Bulb Theatre, *The Magic Library*  
Cockahoop Theatre, *The Guest*  
Natalie Reckert & Mark Morreau, *Natalie Inside Out*  
WhatNot Theatre, *Flotsam & Jetsam's Voyage*  
Lupins Theatre, *It Is I, Seagull / Is Opera Boring?*
- 14:00 **Venue Pitches:**  
Farnham Maltings  
Groundlings Theatre  
Brighton Dome  
Brighton Fringe  
The Spring  
Crying Out Loud
- 14:30 **Closing comment**  
until 15:30 **Refreshments and networking**

The logo for 'PitchUp' is displayed in a stylized, bold font. The word 'Pitch' is in a dark blue color, and 'Up' is in a lighter blue color. The text is set against a light blue, irregular, angular background that resembles a speech bubble or a stylized 'U' shape. The entire logo is tilted slightly to the right.